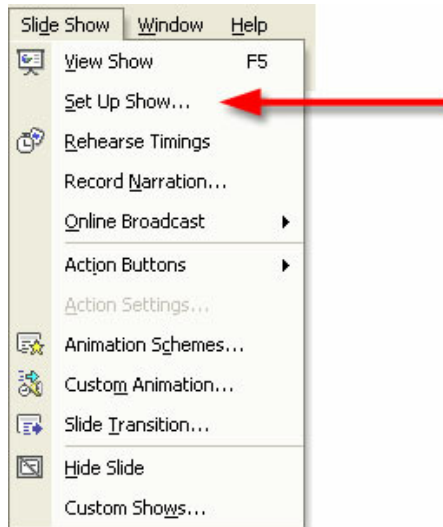


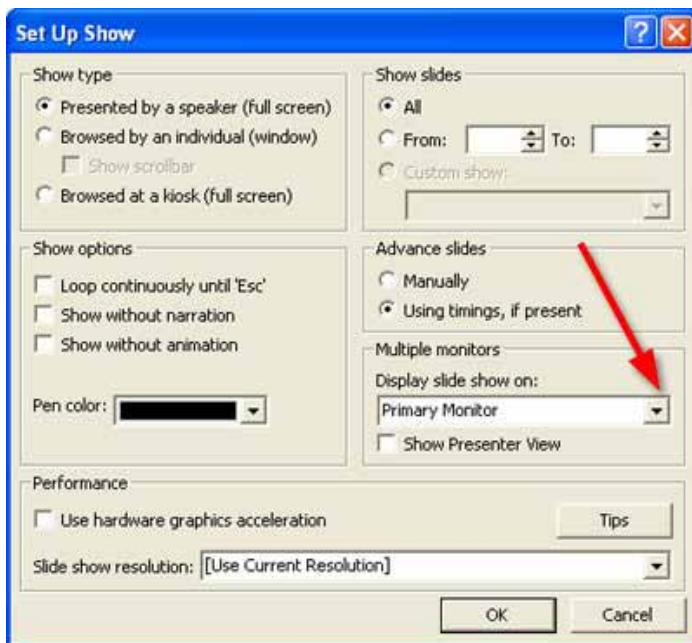
DISPLAY SLIDE SHOW ON



Step 1

NOTE: This tutorial contains instructions on configuring PowerPoint to display slides on a projector screen. This tutorial only works with computers using a dual screen system.

Open a PowerPoint presentation. From the menu bar, select **Slide Show** and choose **Set Up Show...**



Step 2

Under Display slide show on: option click the **down arrow**.

DISPLAY SLIDE SHOW ON



Step 3

Two options will appear: Primary Monitor and Monitor 2. Choose **Monitor 2** and click OK. Now, when you click on the slide show button, the slide show will display through the projector.

NOTE: *Primary Monitor = Computer Monitor*
Monitor 2 = Projector

If you close down a PowerPoint file, it will not remember these settings. You must change this setting every time you open a PowerPoint file.

TIP: *Open up all your PowerPoint files to be used for your service and set them up to show on the projector. This will greatly speed up the process of switching between slide shows during the service.*