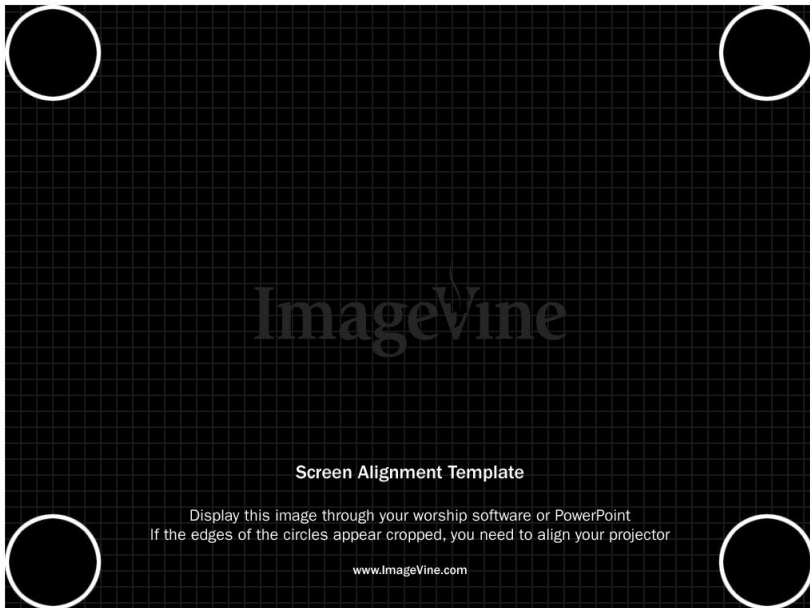


PROJECTOR SCREEN ALIGNMENT



Intro

The projector can be aligned to your screen by either using the projector's remote control or by using the Dual Video card adjustments. It usually takes a combination of both these devices to align the screen properly. You should only have to align the screen once.

Use the downloadable file on the online version of this tutorial to help you align the projector. The file has a thin white boarder around the edge. If you cannot see one of the white edges, then the projected image is being cropped. This can cause things to look off-center and potentially clip text and images.

Step 1

Load the **Screen Alignment** file and send it to the projector.

Step 2

Make sure the projected image is not being digitally zoomed. If you are missing the white boarder on some of the edges your projector may be in digital zoom mode. Digital zoom allows you to zoom in on a portion of the projected image.

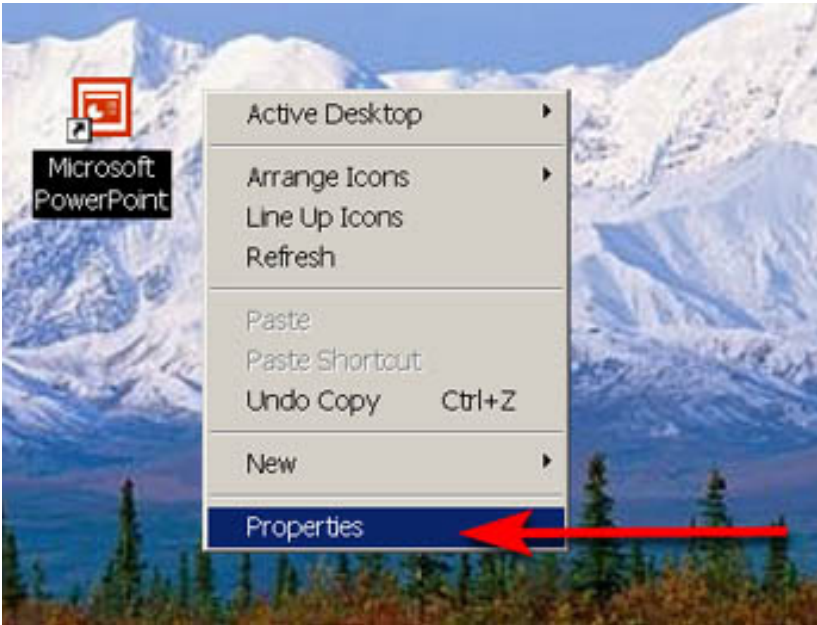
Step 3

Use the **zoom feature** on the remote control to fit the image as best you can to the screen.

Step 4

There is usually a drop down menu option on the projectors menu that will allow you to shift the image right, left, up and down. In some cases you can adjust the projector with this command. If the image slides instead of moving you will have to adjust the image using the Dual Video Card adjustments (follow steps 1-6 below).

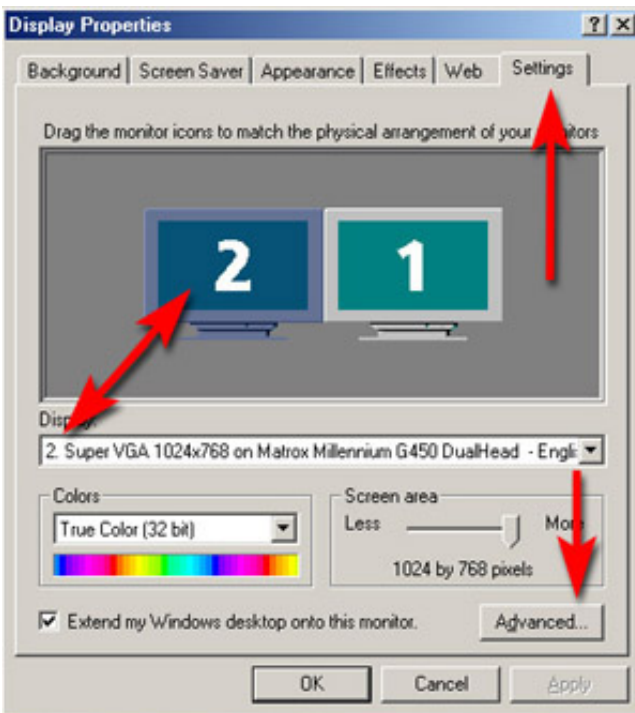
PROJECTOR SCREEN ALIGNMENT



Dual Video Card Adjustments

Step 1

Right click on the desktop. A menu will pop up. Choose the **Properties** command.

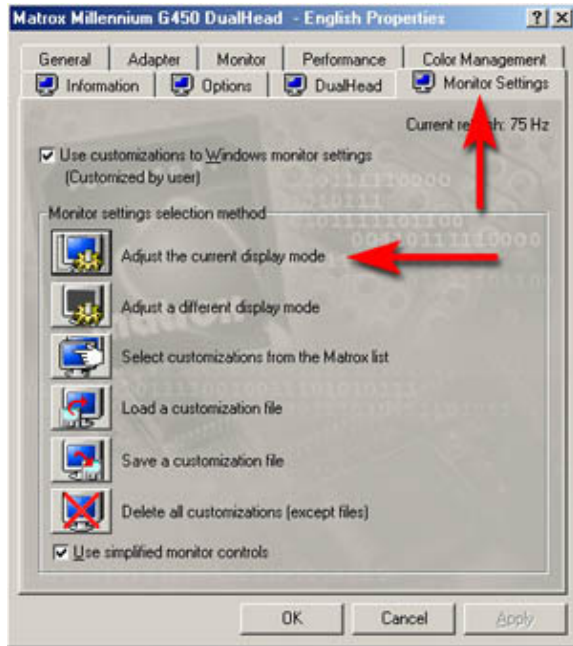


Step 2

A command panel opens up. Choose the **Settings** tab. Then choose the **2** monitor. Click the **Advanced** button.

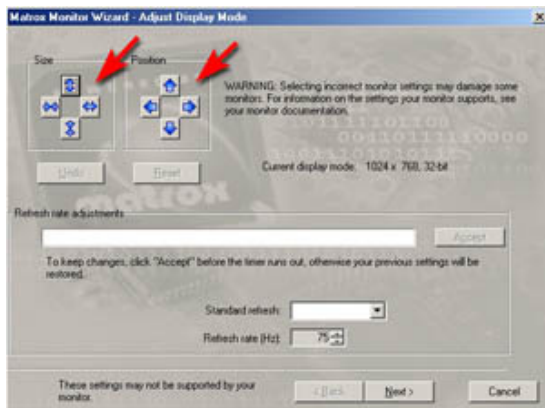
Sample: Below is a sample using a Matrox Dual Head G450 Video Card on how you can align your projector through your video card. **Note: All video cards have different menu and setup options.**

PROJECTOR SCREEN ALIGNMENT



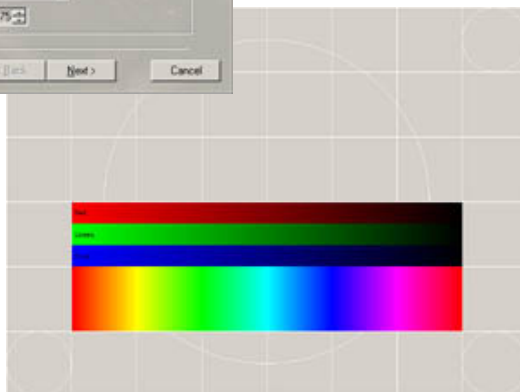
Step 3

A command panel opens up. Choose the **Monitor Settings** tab. Then click the **Adjust the current display mode** button.



Step 4

An alignment screen will show up on your projected screen and a pop up window titled **Adjust Display Mode**. Using the **Size & Position** buttons align the screen.



PROJECTOR SCREEN ALIGNMENT



Step 5

A window pops up to warn you the screen may disappear, click **OK**.



Step 6

Second window pops up and asks if you want to keep the adjustments you just made. Click **Yes**.