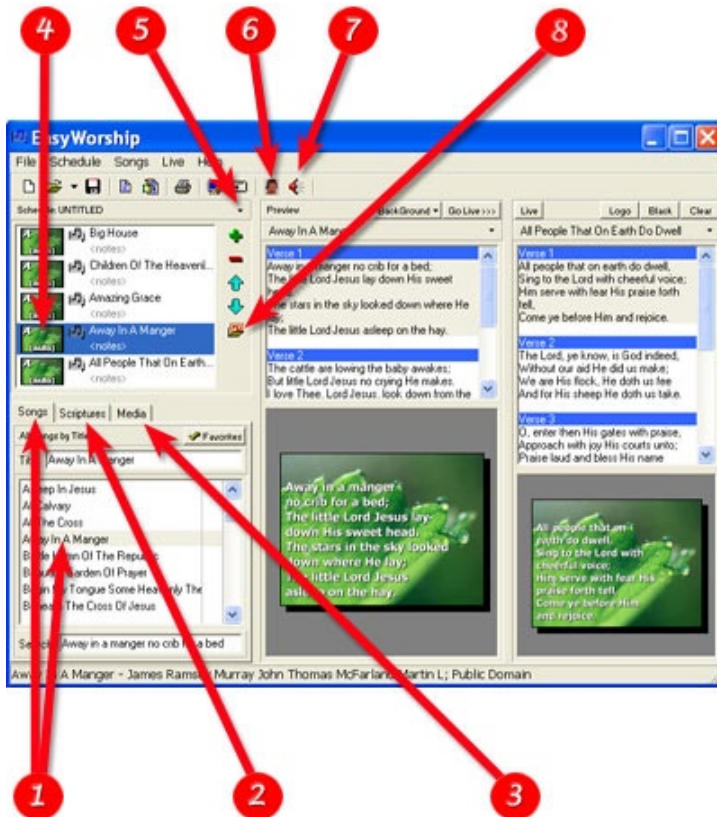
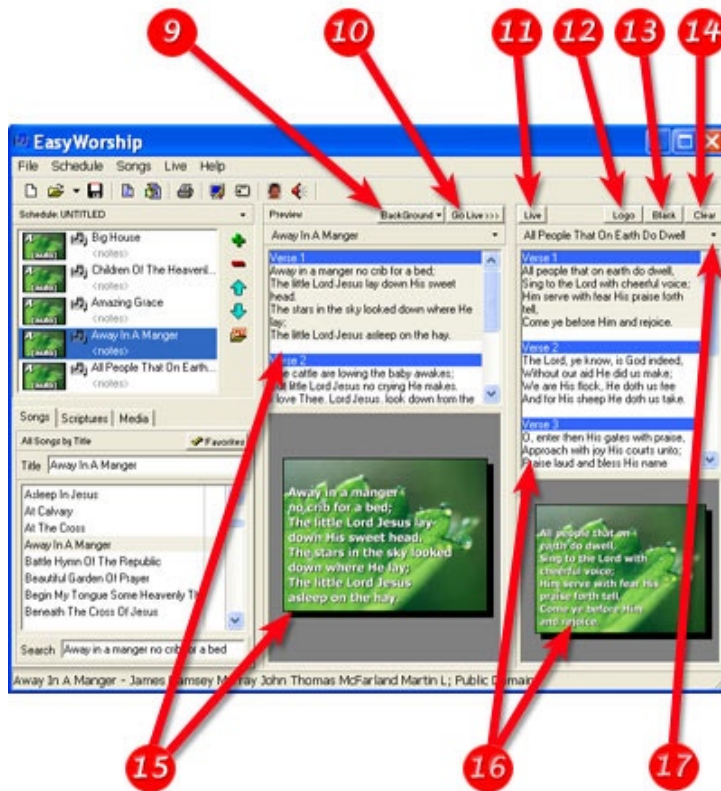


EASYWORSHIP INTERFACE



- 1 Songs Database.** This is a list of all the songs stored in EasyWorship that can be used for Scheduling or displaying. When new songs are entered they will appear here.
- 2 Scriptures.** Using the scripture tab will provide you with the complete Bible that you can use to display verses. Two versions are included, ASV and KJV.
- 3 Media.** Using the media tab you can add video clips, still images, and video feeds to your display. For example, dramatized sermon illustrations, countdown videos, or long play videos. **Note:** This is not the area to enter videos you wish to use behind your worship.
- 4 Schedule Window.** This is where you can create a schedule (order of service). A schedule helps you progress through your songs/service elements in order.
- 5 Schedule View.** Choose between full view (thumbnails) and summary view (text) to view your schedule.
- 6 Nursery Alert.** This is a way of informing parents, etc., that they are needed in the Nursery.
- 7 Message Alert.** This is a way of informing the congregation of a specific need (lights left on a vehicle etc.).
- 8 Import PowerPoint.** This button allows you to import PowerPoint slideshows. If you create your sermons using PowerPoint, EasyWorship will import all the customized animation, settings, and timings. You can also play any of the ImageVine PowerPoint slideshows through EasyWorship.

EASYWORSHIP INTERFACE



- 9 Backgrounds.** The Background button allows you to change the global background for your songs. You can use motion backgrounds, jpeg images, or a simple gradient background.
- 10 Go Live.** Click the Go Live button when you wish to have the item in the preview panel displayed through the projector.
- 11 Live.** The Live button allows you to turn the 2nd output on or off. It is a toggle and on a dual screen system should always be left on.
- 12 Logo.** The Logo button will display your church's logo (supports animated logos).
- 13 Black Screen.** This allows you to blackout the projector screen which is helpful if you need to adjust something and don't need the congregation to see what is happening.
- 14 Clear Screen.** The Clear button clears the overlaid text, but leaves the current background settings. Use this when there is a pause between songs. Clear the screen when the song ends, Go Live with your next song, and un-clear when the new song is starting.
- 15 Preview Window.** The preview window allows you to view the next item you want to project. You can customize the background or choose a verse you want to Go Live with next.
- 16 Live Selector.** The Live Selector window shows what is currently on the screen. Use this area to select the verse of the song that you wish to project.
- 17 Live View.** This allows you to choose between Full View (shows full song lyrics) or Summary View (sub-headings and first line only) in the Live Selector window.