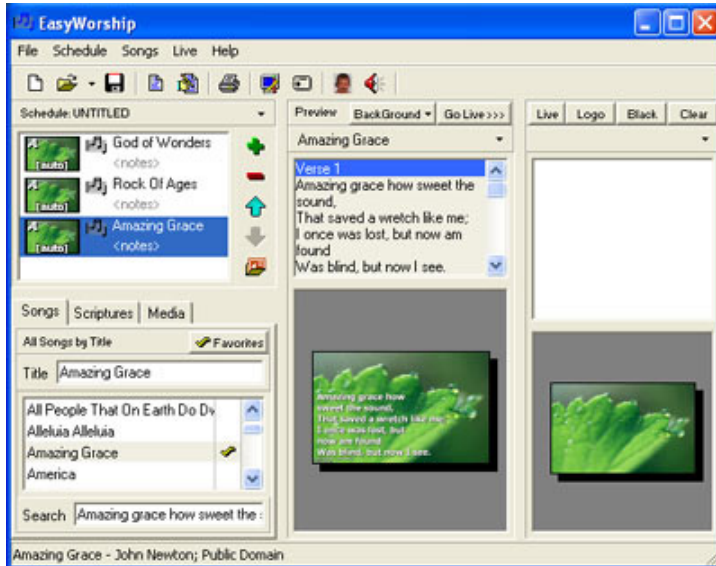


## ASSIGNING PREDEFINED BACKGROUNDS

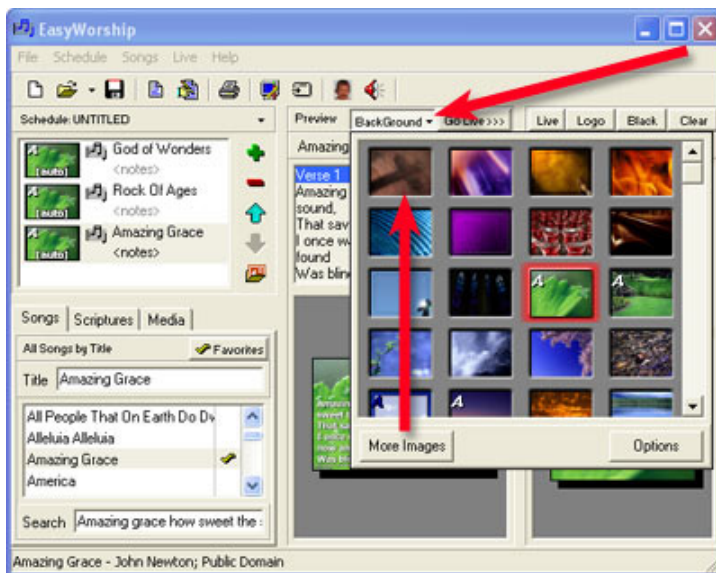


### Intro

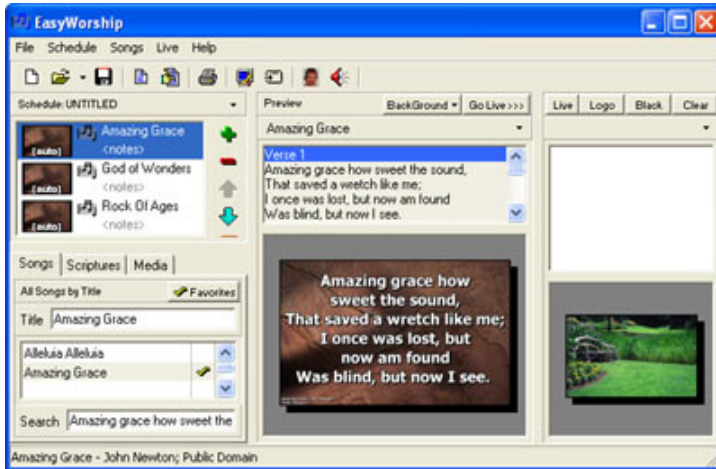
This tutorial will show you how to assign predefined backgrounds.

### Step 1

Add the songs you want into the scheduler. Then click the **Background** button and select the background you wish to assign to your slides.

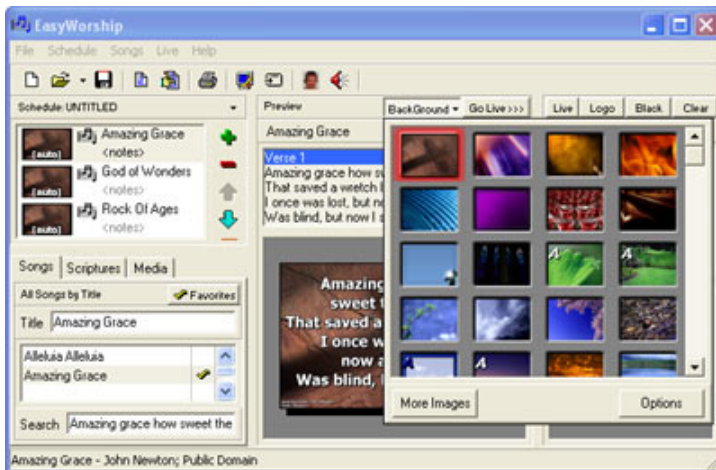


## ASSIGNING PREDEFINED BACKGROUNDS



### Step 2

You can now use the songs with your chosen background for your presentation.



### Step 3

If you click on **Background** again you will see that the background you have chosen is surrounded by a red highlight.