

DRAG AND DROP INTO SCHEDULER

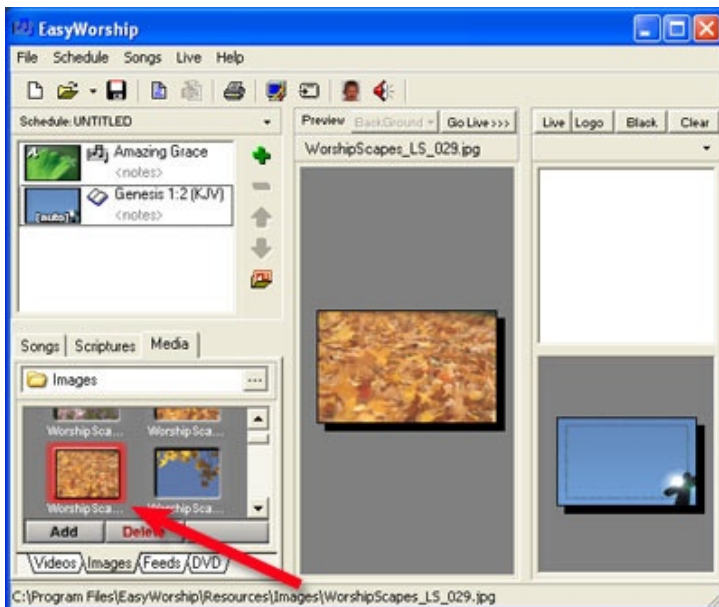


Intro

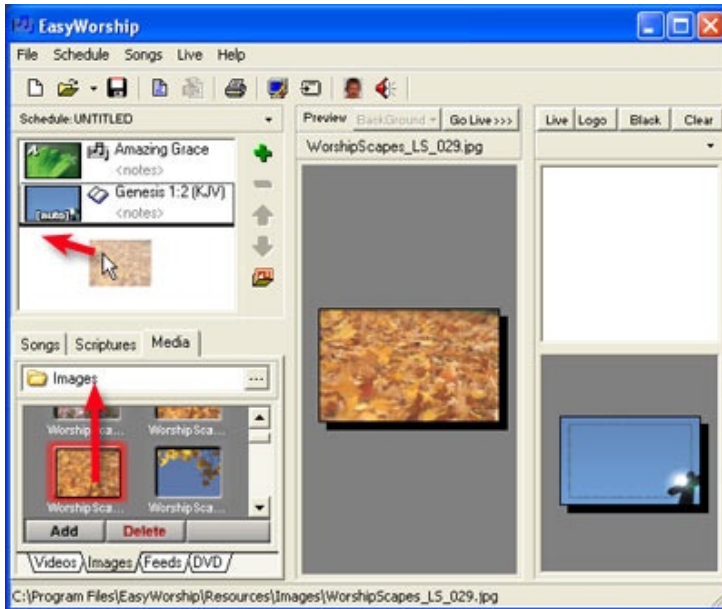
In this tutorial you will learn how to drag and drop songs, scriptures, and Media clips into the schedule.

Step 1

Open EasyWorship, then choose the image, song and/or scripture that you want to drag and drop into the scheduler.

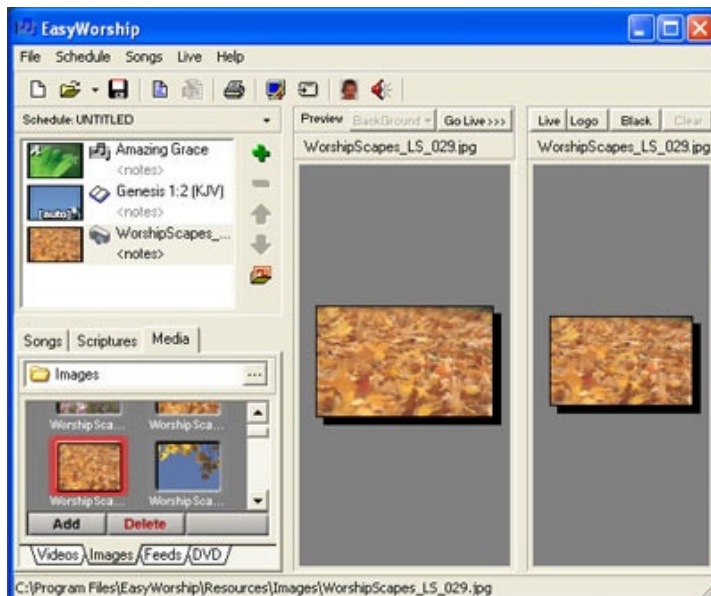


DRAG AND DROP INTO SCHEDULER



Step 2

With the item selected, hold the left mouse button down while you move the cursor, thereby dragging the object, into the schedule.



Step 3

Congratulations! You have now successfully added the item to your schedule.