

ADDING JPEGS TO THE SCHEDULE



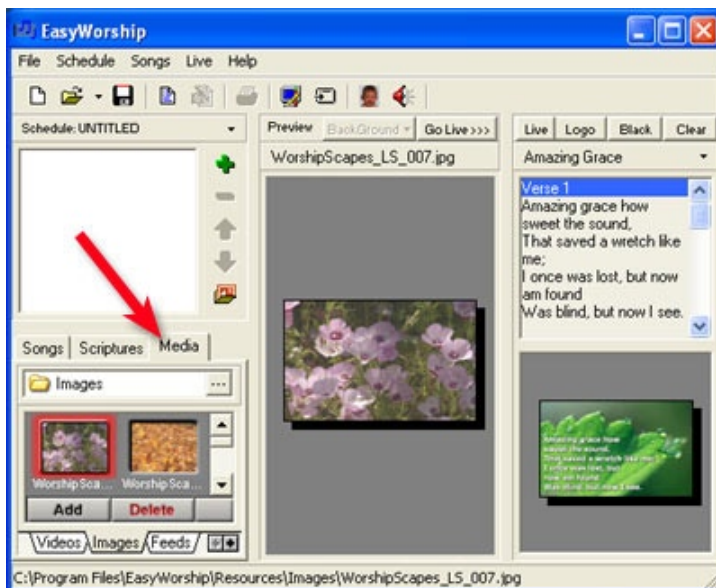
Intro

In this tutorial you will learn how to add a Jpeg image to the schedule.

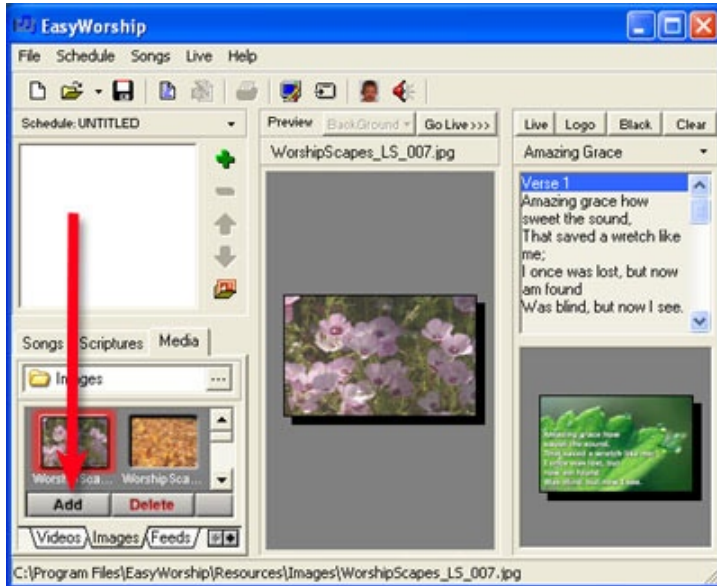
Step 1

Click on the **Media** button.

Note: the Images tab needs to be selected.

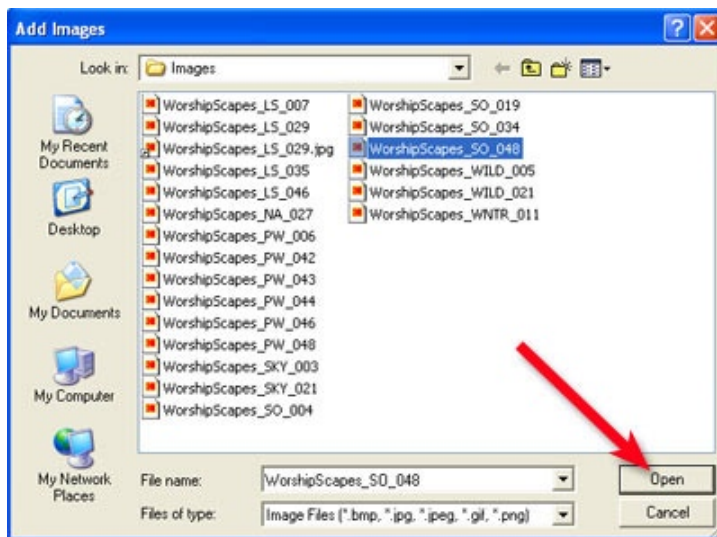


ADDING JPEGS TO THE SCHEDULE



Step 2

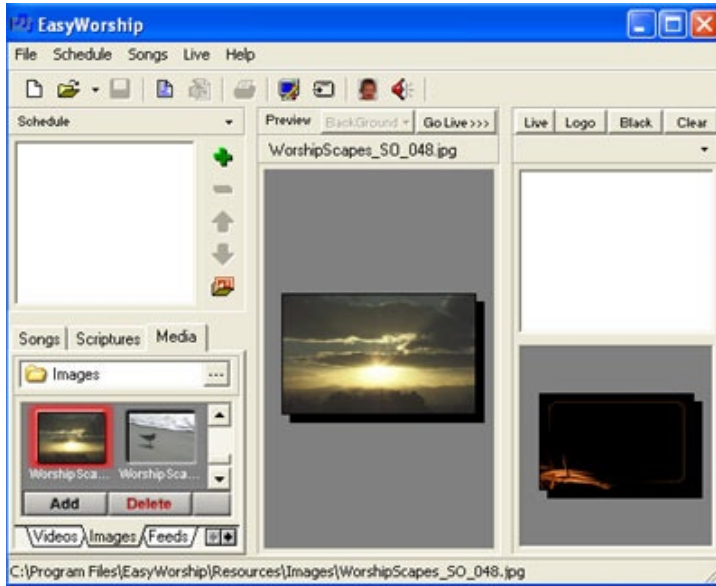
Click on the **Add** button.



Step 3

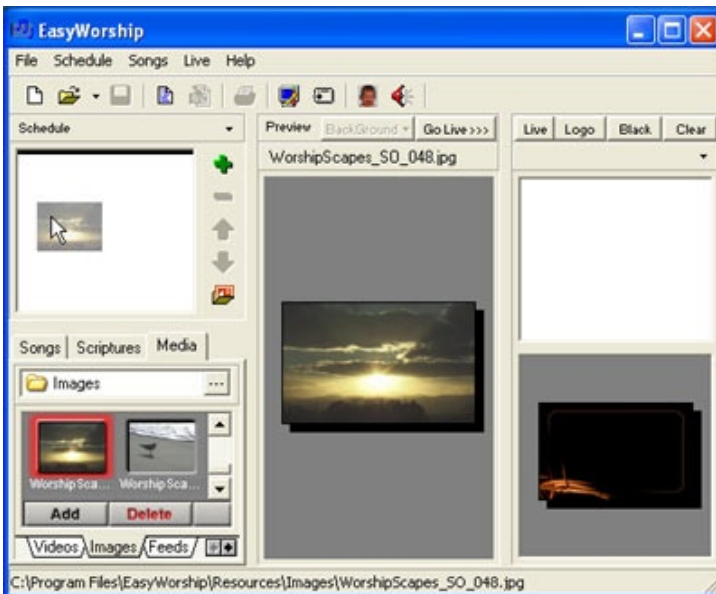
Find the Jpeg image that you want to add to the schedule, select the image and click **Open**.

ADDING JPEGS TO THE SCHEDULE



Step 4

Click on the image.

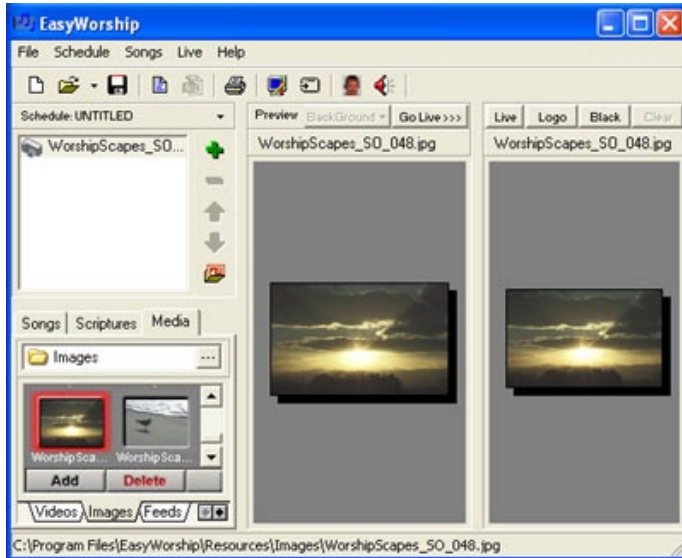


Step 5

Drag and drop the image into the schedule.

Note: you can also double click the image to add it to the schedule.

ADDING JPEGS TO THE SCHEDULE



Step 6

Click on **Go Live** to view your image on screen.