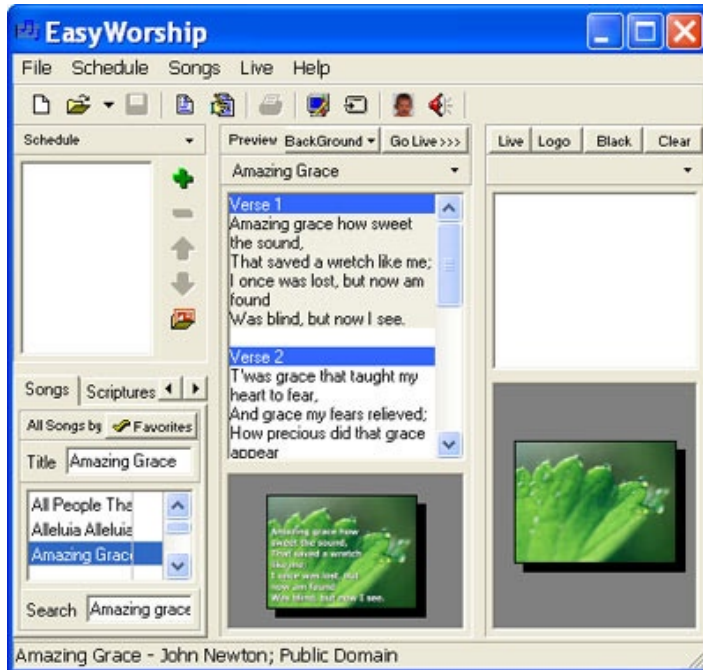


FULL AND SUMMARY VIEW



Intro

There are two views that can be used within the Schedule, the Preview Window, and the Live Window: a **Summary View** and a **Full View**.

For this tutorial we will use the Schedule.



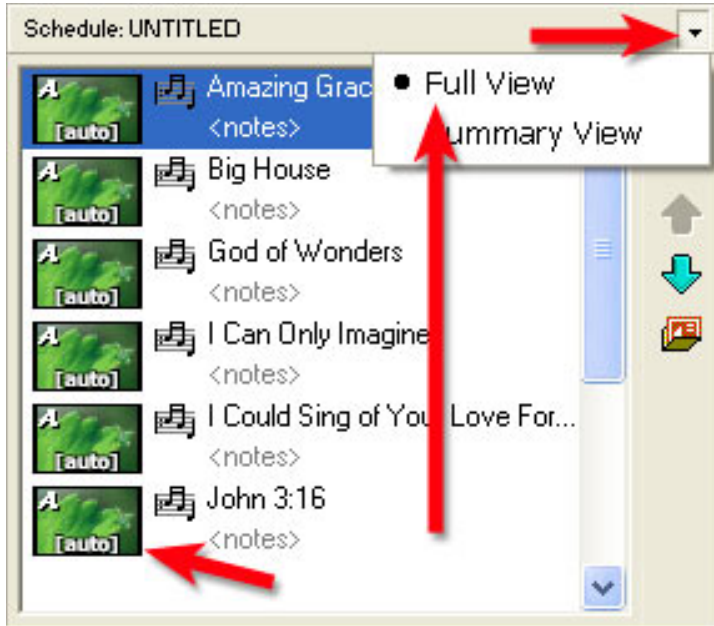
Summary View

The **Summary View** displays titles (Schedule) and sub-headings (Preview/Live only).

To change views, click on the down arrow found at the top right of each of the three panels and click on viewing preference.

To the left is an example of the Summary View.

FULL AND SUMMARY VIEW



Full View

The **Full View** shows song title, background presets, and any notes you may have included (Schedule); or song title as well as sub-headings and full lyrics (Preview/Live).

To the left is an example of the Full View.

Note: each of the three panels: Schedule, Preview, and Live can have their own view selection. For example you may choose to have the Full View for the Schedule and the Summary View for the other two panels.