

SETTING SONGS TO DEFAULTS



Intro

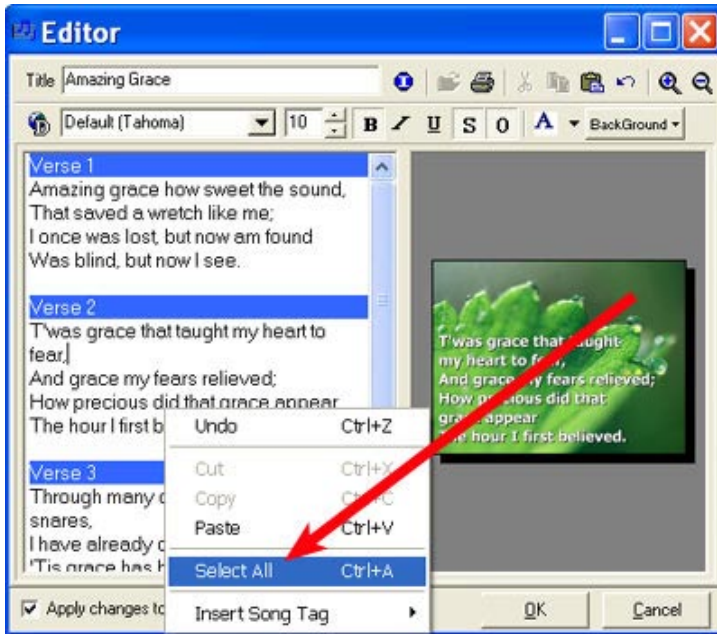
In this tutorial you will learn how to manually restore a song's default settings.



Step 1

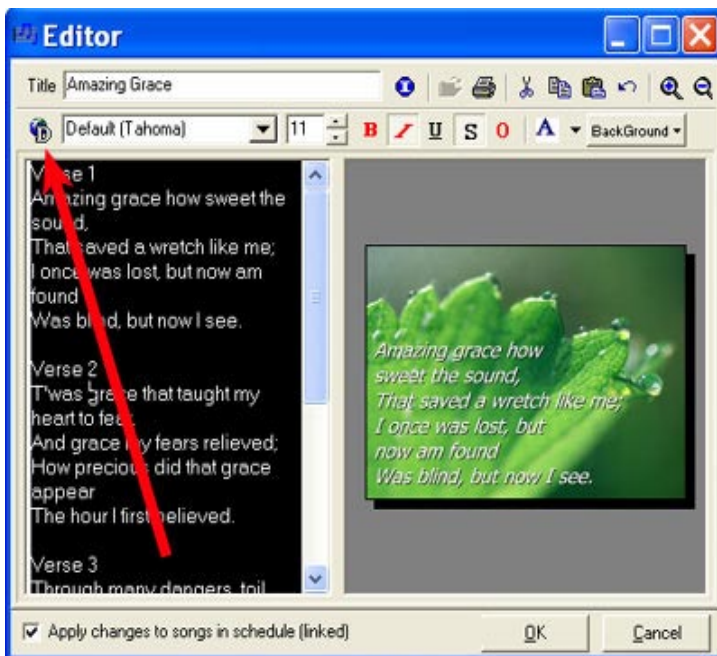
Open EasyWorship. From the **Songs** drop-down menu choose **Edit Song in Database**.

SETTING SONGS TO DEFAULTS



Step 2

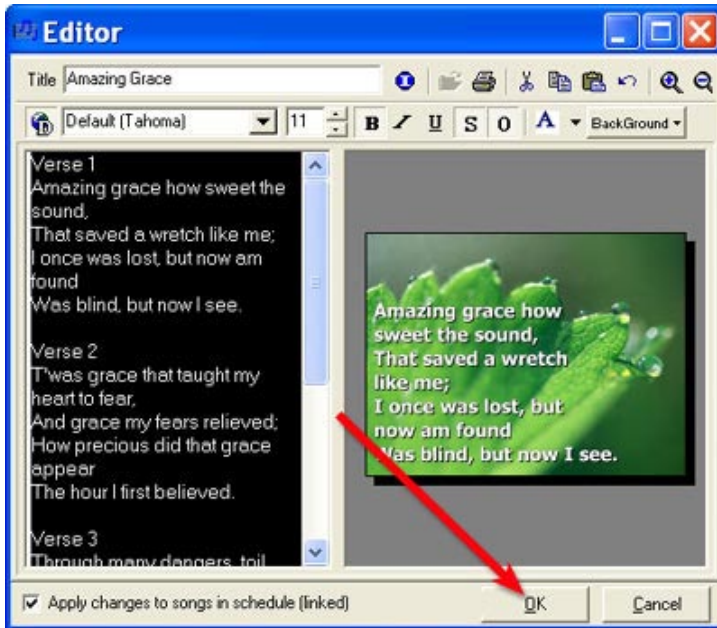
From within the **Editor**, right-click over the verse editing section. Click on **Select All**.



Step 3

To restore all text to the default settings, click the 'reset all text attributes back to default' button.

SETTING SONGS TO DEFAULTS



Step 4

After restoring the defaults, click **OK** to leave the editor and to save your changes.